

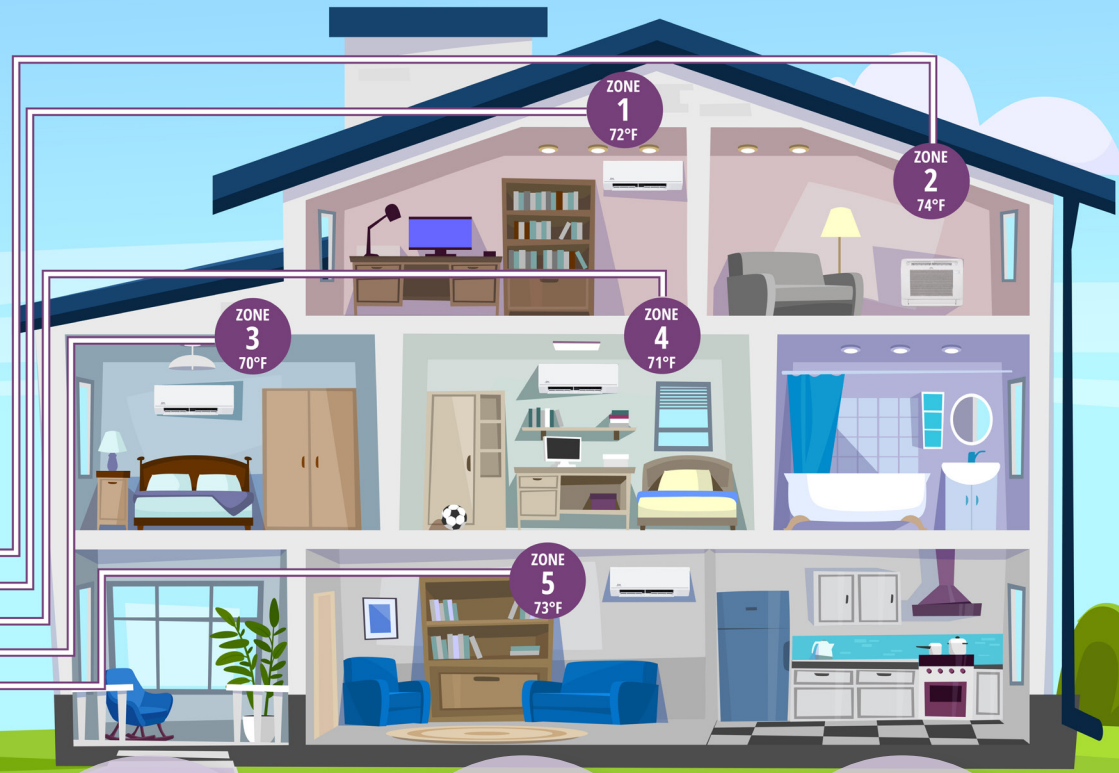
**HYPER and REGULAR Series**

UP TO 23 SEER2

UP TO 24.6 SEER2

*The newest generation of outdoor units now provide a wide range of compatibility across Cooper&Hunter's vast product selection to better serve any project configuration.*

LIMITED WARRANTY  
**7 YEARS**  
 COMPRESSOR  
**5 YEARS**  
 PARTS



6K-36K Btu/h



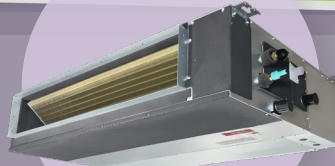
WALL MOUNT

9K-24K Btu/h



CEILING CASSETTE

9K-24K Btu/h



SLIM DUCT

6K-18K Btu/h



ONE WAY CASSETTE

12K-16K Btu/h



FLOOR CONSOLE

18K-24K Btu/h



FLOOR CEILING

18K-24K Btu/h



MULTI POSITION AIR HANDLER



cooperandhunter.us | 786-953-6706



**REGULAR**

**HYPER**

Series			ES-Series	ES-Series	ES-Series	ES-Series	ES-Series	HPR-Series	HPR-Series	HPR-Series	HPR-Series	HPR-Series
Outdoor Model			CH-18MES-230VO	CH-28MES-230VO	CH-36MES-230VO	CH-48MES-230VO	CH-55MES-230VO	CH-HPR19M-230VO	CH-HPR28M-230VO	CH-HPR36M-230VO	CH-HPR48M-230VO	CH-HPR55M-230VO
Power Supply	Rated	V, Ph, Hz	208/230, 1, 60	208/230, 1, 60	208/230, 1, 60	208/230, 1, 60	208/230, 1, 60	208/230, 1, 60	208/230, 1, 60	208/230, 1, 60	208/230, 1, 60	208/230, 1, 60
	Voltage Range	V	187-253	187-253	187-253	187-253	187-253	187-253	187-253	187-253	187-253	187-253
Cooling	Rated Capacity (range)	Btu/h	18,000(5,650-22,000)	28,000(9,838-30,438)	36,000(8,209-40,555)	48,000(19,000-50,000)	55,000(11,600-57,300)	19,000(5,500-25,000)	28,000(7,995-32,826)	36,000(17,900-42,000)	48,000(19,300-51,000)	55,000(11,600-58,000)
	Rated Current	A	6.2	11	13.6	16.8	23.5	9.1	12.4	11.8	18	23.5
	EER2	Btu/h	13.9	12.7	11.7	12.5	10.5	12.5	12.5	13.6	11.7	10.5
	SEER2	Btu/h	22.9	24.6	23.9	23.4	21.3	22	23	22.2	21.8	22
Heating at 47°F	Rated Capacity (range)	Btu/h	19,000(5,050-24,400)	28,000(8,218-31,000)	37,000(8,008-44,632)	48,000(12,500-52,000)	55,000(12,500-63,000)	20,000(8,100-29,700)	28,000(5,035-38,712)	36,500(12,500-49,000)	49,000(11,500-58,000)	55,000(33,000-63,000)
	Rated Current	A	6.3	10.5	13	17.1	22.5	9.4	10.5	12.2	17.8	22.5
	COP	W/W	3.74	3.73	3.5	3.57	3.2	3.4	3.66	3.9	3.8	3.05
	HSPF4		10.5	9.3	9.3	8.7	9.1	9.8	10.6	10.3	9.8	9.3
	HSPF5		8	7.1	7.1	6.8	6.8	7.7	8.1	8.3	7.6	7.3
Heating at 5°F	Rated Capacity	Btu/h	12,600	19,000	25,200	33,000	32,200	19,000	24,000	36,000	48,000	37,800
	COP	W/W	2	2	1.8	1.8	1.8	1.96	1.75	1.9	2	1.8
Minimum Circuit Ampacity (Outdoor unit)	A	18	24.5	25	40	40	20	25	40	42	40	
Max. Fuse (Outdoor unit)	A	25	30	40	60	60	25	40	60	50	60	
Outdoor Air Flow (Max)	CFM	1,765	2,129	2,147	4,500	4,500	2,129	2,147	4,500	4,500	4,500	
Outdoor Noise Level (Sound Pressure)	dB(A)	58	61	63	64	62	61	63	63	65	62	
Dimension (WxDxH)	inch	35.04x13.46x26.50	37.24x16.14x31.89	37.24x16.14x31.89	37.48x16.34x52.48	37.48x16.34x52.48	37.24x16.14x31.89	37.24x16.14x31.89	37.48x16.34x52.48	37.48x16.34x52.48	37.48x16.34x52.48	37.48x16.34x52.48
Packing (WxDxH)	inch	40.55x17.24x29.53	42.91x19.69x34.84	42.91x19.69x34.84	43.11x19.49x58.27	43.11x19.49x58.27	42.91x19.69x34.84	42.91x19.69x34.84	43.11x19.49x58.27	43.11x19.49x58.27	43.11x19.49x58.27	43.11x19.49x58.27
Net/Gross Weight		100/109	140/151	169/181	226/257	224/257	138/149	168/179	223/254	238/270	233/266	
Refrigerant Type/Charged	oz	R410A/65.26	R410A/91.7	R410A/134.04	R410A/162	R410A/162	R410A/91.7	R410A/134.04	R410A/162	R410A/162	R410A/162	
Refrigerant Precharge	ft	49	74	98	123	123	49	74	98	123	123	
Additional Charge for Each	oz/ft	0.16 for 1/4 in liquid pipe / *0.32 for 3/8 in liquid pipe	0.16	0.16	0.16 - *0.32	0.16 - *0.32	0.16	0.16 - *0.32	0.16 - *0.32	0.16 - *0.32	0.16 - *0.32	
Design Pressure	PSIG	550/340	550/340	550/340	550/340	550/340	550/340	550/340	550/340	550/340	550/340	
Refrigerant Piping	Liquid Side	inch	2 x 1/4"	3 x 1/4"	4 x 1/4"	5 x 1/4"	5 x 1/4"	2 x 1/4"	3 x 1/4"	4 x 1/4"	5 x 1/4"	5 x 1/4"
	Gas Side	inch	2 x 3/8"	3 x 3/8"	3 x 3/8" + 1 x 1/2"	3 x 3/8" + 2 x 1/2"	3 x 3/8" + 2 x 1/2"	2 x 3/8"	2 x 3/8" + 1 x 1/2"	3 x 3/8" + 1 x 1/2"	3 x 3/8" + 2 x 1/2"	3 x 3/8" + 2 x 1/2"
Max. Pipe Length	ft	131	197	262	262	262	131	197	262	262	262	
Max. Length for One Indoor Unit	ft	82	98	115	115	115	82	98	115	115	115	
Max. Height Difference in Level	ft	49	49	49	49	49	49	49	49	49	49.21	
Max. Height Difference Between Indoor Units	ft	33	33	33	33	33	33	33	33	33	33	
Ambient Temperature	Cooling	°F	5-122	5-122	5-122	5-122	5-122	5-122	5-122	5-122	5-122	5-122
	Heating	°F	-13-75	-13-75	-13-75	-13-75	-13-75	-22-75	-22-75	-22-75	-22-75	-22-75
Certification	AHRI		✓	✓	✓	✓	✓	✓	✓	✓	✓	✓
	Energy Star		✓	✓	✓	✓	✓	✓	✓	✓	✓	✓
	NEEP		✓	✓	✓	✓	✓	✓	✓	✓	✓	✓
	UL		✓	✓	✓	✓	✓	✓	✓	✓	✓	✓

Please note: These values represent outdoor units combined with the Astoria Indoor Wall Mounted Mini-Split. Values will vary depending on the combination of indoor units used.

**REGULAR MULTI-ZONE Heat Pump Outdoor Unit**

The C&H Multi-Zone systems with inverter technology are some of today's most advanced ductless split heat pumps. Up to 5 indoor units can be connected to a single outdoor unit, reducing the number of outdoor units required. All indoor units can be individually controlled and do not need to be installed at the same time.

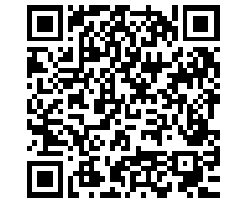


**HYPER MULTI-ZONE Heat Pump Outdoor Unit**

With our modern heat pump technology, the Hyper Heat series offers dependable cooling with the capability to heat in ambient temperatures as low as -22°F, making it an excellent energy-efficient solution for colder climates.



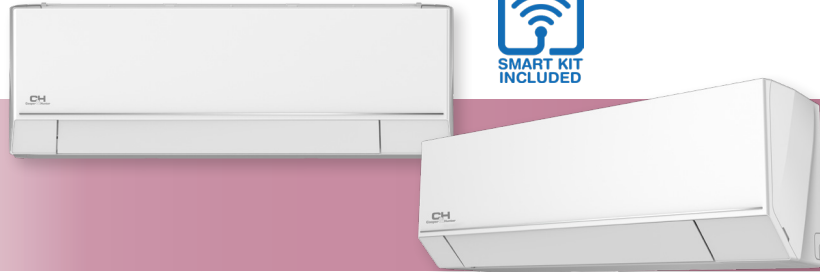
SCAN here to access our Multi-Unit Combination Guide



REGULAR



HYPER

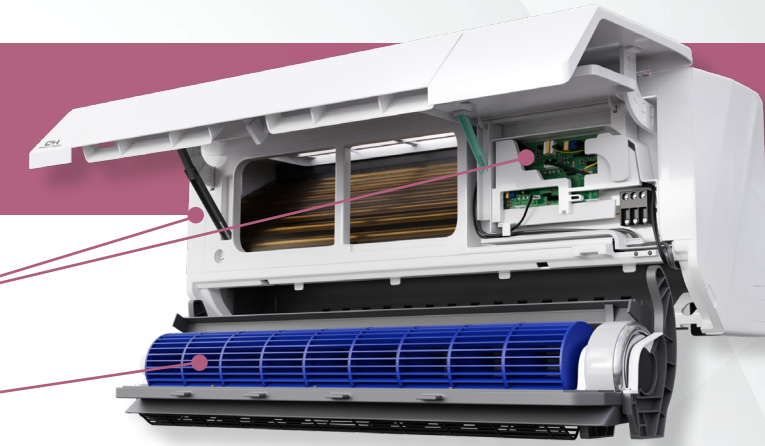


# ASTORIA

Indoor Model			CH-06MASTWM-230VI	CH-09MASTWM-230VI	CH-12MASTWM-230VI	CH-18MASTWM-230VI	CH-24MASTWM-230VI	CH-30MASTWM-230VI	CH-36MASTWM-230VI
Power Supply	Rated	V, Ph, Hz	208/230, 1, 60	208/230, 1, 60	208/230, 1, 60	208/230, 1, 60	208/230, 1, 60	208/230, 1, 60	208/230, 1, 60
	Rated Capacity (range)	Btu/h	6,000	9,000	12,000	18,000	24,000	30,000	36,000
Minimum Circuit Ampacity (MCA)	A		3	3	3	3	3	3	3
Max. Fuse	A		15	15	15	15	15	15	15
Indoor Air Flow (Turbo/Hi/Mi/Lo)	CFM		364/317/217/167	382/335/229/176	382/335/229/176	635/523/376/306	718/611/414/318	843/646/505/382	843/639/505/382
Indoor Noise Level (Hi/Mi/Lo)	dB(A)		38/34/23	36/23/23	38/34/23	47/43/33	44/40/34	46/40/33	47/42/35
Indoor	Dimension (WxDxH)	inch	33.66x9.09x11.69	33.66x9.09x11.69	33.66x9.09x11.69	40.28x9.65x12.56	47.09x10.98x14.57	44.88x10.83x14.57	44.88x10.83x14.57
	Packing (WxDxH)	inch	36.22x12.20x14.57	36.22x12.20x14.57	36.22x12.20x14.57	43.11x12.80x15.75	50.39x14.17x17.91	48.43x17.91x13.98	48.43x17.91x13.98
	Net/Gross Weight	lbs.	23/29	23/29	23/29	27/36	44/55	43/55	43/55
Room Temperature	Cooling	F	60 - 90	60 - 90	60 - 90	60 - 90	60 - 90	60 - 90	60 - 90
	Heating	F	32 - 86	32 - 86	32 - 86	32 - 86	32 - 86	32 - 86	32 - 86
Liquid Side/Gas side	Inch		1/4" / 3/8"	1/4" / 3/8"	1/4" / 1/2"	1/4" / 1/2"	3/8" / 5/8"	3/8" / 5/8"	3/8" / 5/8"

## 6K, 9K, 12K, 18K, 24K, 30K, 36K Btu/h

- E-Box and PCB located in the front of the unit with a cover kickstand providing easy access
- Revolutionary design offers convenient disassembly & maintenance with an easy-to-remove blower wheel
- Larger air inlet/outlet for improved air flow
- Auto-Swing for vertical and horizontal louvers
- Easy to remove magnetic filter on top
- Compatible with regular (-13°F) or Hyper (-22°F) outdoor units
- Follow Me mode
- 46° Freeze Protection



### CONTROL OPTIONS

- Compatible with C&H wall thermostat (*Not included*)
- Smart Kit included with Astoria, Available for purchase with Olivia
- Downloadable C&H Remote app

# OLIVIA



Indoor Model			CH-06MOLVWM-230VI	CH-09MOLVWM-230VI	CH-12MOLVWM-230VI	CH-18MOLVWM-230VI	CH-24MOLVWM-230VI	CH-30ELVWM-230VI	CH-36ELVWM-230VI	CH-30ELSPHWM-230VI	CH-36ELSPHWM-230VI
Power Supply	Rated	V, Ph, Hz	208/230, 1, 60	208/230, 1, 60	208/230, 1, 60	208/230, 1, 60	208/230, 1, 60	208/230, 1, 60	208/230, 1, 60	208/230, 1, 60	208/230, 1, 60
	Rated Capacity (range)	Btu/h	6,000	9,000	12,000	18,000	24,000	30,000	36,000	30,000	36,000
Minimum Circuit Ampacity (MCA)	A		3	3	3	3	3	3	3	3	3
Max. Fuse	A		15	15	15	15	15	15	15	15	15
Indoor Air Flow (Turbo/Hi/Mi/Lo)	CFM		341/300/241/176	341/300/241/176	341/300/241/176	760/530/459/382	760/601/459/382	740/701/536/380	794/653/447/329	823/794/617/470	882/732/517/400
Indoor Noise Level (Hi/Mi/Lo)	dB(A)		38/33/20	40/34/23	42/36/25	45/41/24	48/40/28	49/43/39	54/45/40	51/47/44	56/54/40
Indoor	Dimension (WxDxH)	inch	28.70x7.87x11.50	31.57x7.87x11.61	31.57x7.87x11.61	42.64x9.61x13.23	42.60x9.21x13.27	49.57x11.14x14.25	49.57x11.14x14.25	49.57x11.10x14.25	49.57x11.10x14.25
	Packing (WxDxH)	inch	31.10x10.63x14.76	34.45x11.22x14.96	34.45x11.22x14.96	45.47x16.34x12.40	45.47x16.34x12.40	52.76x17.72x15.16	52.76x17.72x15.16	52.76x17.72x15.16	52.76x17.72x15.16
	Net/Gross Weight	lbs.	17/22	19/24	19/24	29/37	30/38	43/55	43/55	37/50	40/52
Room Temperature	Cooling	F	60 - 90	60 - 90	60 - 90	60 - 90	60 - 90	60 - 90	60 - 90	62 - 90	62 - 90
	Heating	F	32 - 86	32 - 86	32 - 86	32 - 86	32 - 86	32 - 86	32 - 86	32 - 86	32 - 86
Liquid Side/Gas Side	inch		1/4" / 3/8"	1/4" / 3/8"	1/4" / 1/2"	1/4" / 1/2"	3/8" / 5/8"	3/8" / 5/8"	3/8" / 5/8"	3/8" / 5/8"	3/8" / 5/8"

# OLIVIA

MIDNIGHT



Indoor Model			CH-B06MOLVWM-230VI	CH-B09MOLVWM-230VI	CH-B12MOLVWM-230VI	CH-B18MOLVWM-230VI	CH-B24MOLVWM-230VI
Power Supply	Rated	V, Ph, Hz	208/230, 1, 60	208/230, 1, 60	208/230, 1, 60	208/230, 1, 60	208/230, 1, 60
	Rated Capacity (range)	Btu/h	6,000	9,000	12,000	18,000	24,000
Minimum Circuit Ampacity (MCA)	A		3	3	3	3	3
Max. Fuse	A		15	15	15	15	15
Indoor Air Flow (Turbo/Hi/Mi/Lo)	CFM		294/247/176/141	341/291/194/152	341/291/194/153	761/531/459/382	761/601/459/382
Indoor Noise Level (Hi/Mi/Lo)	dB(A)		38/33/20	40/35/23	42/36/24	46/40/25	46/44/35
Indoor	Dimension (WxDxH)	inch	28.70x7.87x11.50	31.57x7.87x11.61	31.57x7.87x11.61	42.64x9.61x13.23	42.60x9.21x13.27
	Packing (WxDxH)	inch	31.10x10.63x14.76	34.45x11.22x14.96	34.45x11.22x14.96	45.47x16.34x12.40	45.47x16.34x12.40
	Net/Gross Weight	lbs.	17/22	19/24	19/24	29/37	30/38
Room Temperature	Cooling	F	60 - 90	60 - 90	60 - 90	60 - 90	60 - 90
	Heating	F	32 - 86	32 - 86	32 - 86	32 - 86	32 - 86
Liquid Side/Gas Side	inch		1/4" / 3/8"	1/4" / 3/8"	1/4" / 1/2"	1/4" / 1/2"	3/8" / 5/8"

## MINI FLOOR CONSOLE



Humidity Sensor

Model		CH-12MMC-230VI	CH-16MMC-230VI
Power Supply	V-Hz-Ph	208-230V / 60Hz, 1Ph	208-230V / 60Hz, 1Ph
Cooling Capacity	Btu/h	12,000	16,000
Minimum Circuit Ampacity (MCA)	A	3	3
MAX.FUSE	A	15	15
Air Flow (Turbo/Hi/Mi/Lo) (No duct)	CFM	441/376/324/265	500/441/382/324
Noise Level (Hi/Mi/Lo)	dB(A)	40/37/26	40/37/26
Unit Dimension(WxDxH)	in	31x8x24	31x8x24
Package Dimension(WxDxH)	in	34x11x28	34x11x28
Net/Gross Weight	lb	33/41.4	33/41.4
Indoor Temperature (cooling/ heating)	F°	62-90/32-86	62-90/32-86
Liquid side / Gas side	in	1/4" - 1/2"	1/4" - 1/2"

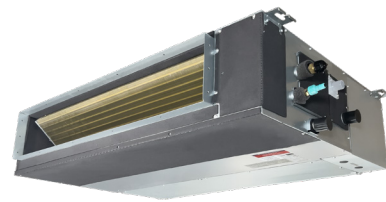
## UNIVERSAL FLOOR & CEILING



\*Wireless Port Kit Optional

Model		CH-18MSPHFC-230VI	CH-24MSPHFC-230VI
Power Supply	V-Hz-Ph	208-230V / 60Hz, 1Ph	208-230V / 60Hz, 1Ph
Cooling Capacity	Btu/h	18,000	24,000
Minimum Circuit Ampacity (MCA)	A	1,9	2.5
MAX.FUSE	A	15	15
Air Flow (Hi/Mi/Lo) (No duct)	CFM	548/485/420	758/708/598
Noise Level (Hi/Mi/Lo)	dB(A)	47/44/41	51/47/42
Unit Dimension(WxDxH)	in	42.1x26.6x9.3	42.1x26.6x9.3
Package Dimension(WxDxH)	in	45.1x29.7x12.5	45.1x29.7x12.5
Net/Gross Weight	lb	57.1/68.4	60.6/72.1
Indoor Temperature (cooling/ heating)	F°	62-90/32-86	62-90/32-86
Liquid side / Gas side	in	1/4" - 1/2"	3/8" - 5/8"

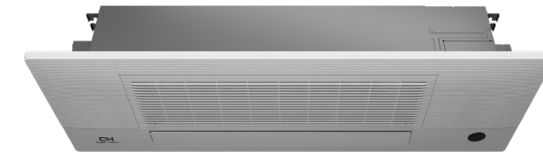
## SLIM DUCT



(\*Smart Kit Built-In)

Model		CH-M09DTUI	CH-M12DTUI	CH-M18DTUI	CH-24MDT-W*
Power Supply	V-Hz-Ph	208-230V / 60Hz/1Ph	208-230V / 60Hz/1Ph	208-230V / 60Hz/1Ph	208-230V / 60Hz/1Ph
Cooling Capacity	Btu/h	9,000	11,500	17,000	23,000
Minimum Circuit Ampacity (MCA)	A	1.3	1.3	3	3
MAX. FUSE	A	15	15	15	15
Air Flow (Hi/Mi/Lo)	CFM	353/282/176	353/282/176	529/450/371	775/693/435
Noise Level (Hi/Mi/Lo)	dB(A)	33.5/28.5/27	38/35/31	42/38/36	44/41/37
Unit Dimension (WxDxH)	in	27.6x19.9x7.9	27.6x19.9x7.9	34.7x26.5x8.3	43.3x30.5x9.8
Packing Dimension (WxDxH)	in	33.9x21.3x11.2	33.9x21.3x11.2	42.1x28.5x10.6	51.4x31.7x12
Net/Gross Weight	lb	39/48.3	39/49	55.3/67	90.39/105.8
Design pressure	PSIG	550/340	550/340	550/340	550/340
Room Temperature	F°	62-90/32-86	62-90/32-86	62-90/32-86	62-90/32-86
Liquid side/ Gas side	in	1/4" - 3/8"	1/4" - 1/2"	1/4" - 1/2"	3/8" - 5/8"

## ONE WAY CASSETTE

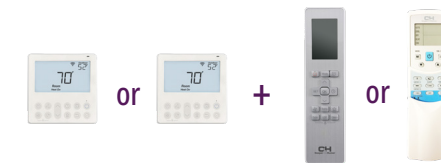


Humidity Sensor

(\*Smart Kit Built-In)

Model		CH-06MCT1W-230VI CH-06MCT1W-W*	CH-09MCT1W-230VI CH-09MCT1W-W*	CH-12MCT1W-230VI CH-12MCT1W-W*	CH-18MCT1W-230VI CH-18MCT1W-W*
Power supply	V- Ph-Hz	208/230V,1Ph,60Hz	208/230V,1Ph,60Hz	208/230V,1Ph,60Hz	208/230V,1Ph,60Hz
Cooling Capacity	Btu/hr	6,500	9,000	12,000	18,000
Minimum Circuit Ampacity (MCA)	A	3	3	3	3
MAX.FUSE	A	15	15	15	15
Air Flow (Turbo/Hi/Mi/Lo) (No duct)	CFM	341/294/258/235	341/294/258/235	353/312/282/247	400/352/3000/207
Noise Level (Hi/Mi/Lo)	dB(A)	38/36/33	38/36/33	40.5/38.5/34.5	44/41/34
Unit Dimension(WxDxH)	in	50.31x13.19x8.98	50.31x13.19x8.98	50.31x13.19x8.98	50.31x13.19x8.98
Package Dimension(WxDxH)	in	57.60x22.48x22.64	57.60x22.48x22.64	57.60x22.48x22.64	57.60x22.48x22.64
Net/Gross Weight	lb	43.87/81.35	43.87/81.35	45.19/82.89	45.19/82.89
Indoor Temperature (cooling/ heating)	F°	60-90/32-86	60-90/32-86	60-90/32-86	60-90/32-86
Liquid side / Gas side	PSIG	1/4" / 3/8"	1/4" / 3/8"	1/4" / 1/2"	1/4" / 1/2"

## CEILING CASSETTE



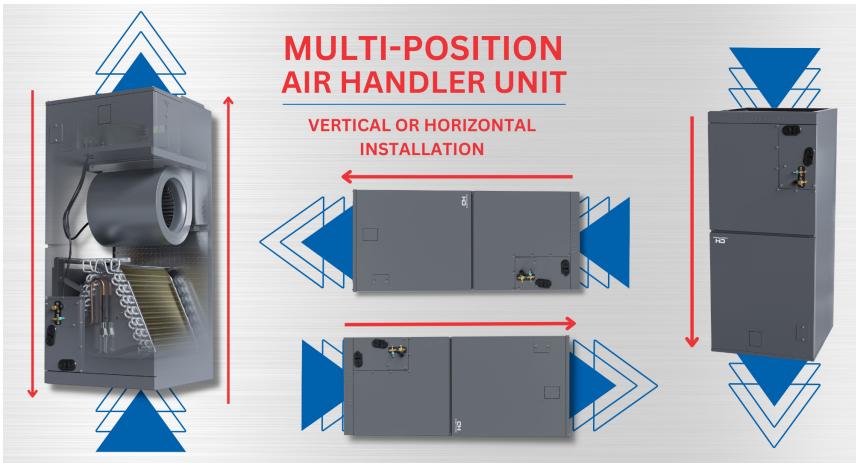
(\*Smart Kit Built-In)

Model		CH-09MSPHCT-230VI	CH-12MSPHCT-230VI	CH-18MCT-W*	CH-24MCT-W*
Power Supply	V-Hz-Ph	208-230V / 60Hz, 1Ph	208-230V / 60Hz, 1Ph	208-230V / 60Hz, 1Ph	208-230V / 60Hz, 1Ph
Cooling Capacity	Btu/h	9,000 (2,970-10,500)	12,000 (2,800-14,100)	16,000 (5,600-16,000)	24,000 (8,130-26,272)
Minimum Circuit Ampacity (MCA)	A	1.2	1.3	1.9	2.5
MAX.FUSE	A	15	15	15	15
Air Flow (Turbo/Hi/Mi/Lo)	CFM	389/353/306/271	371/335/282/241	300/562/485/439	765/706/635/547
Noise Level (Hi/Mi/Lo)	dB(A)	39.5/36/32.5	40.5/35.5/31.5	43.5/38.5/35.5	48/46/43
Unit Dimension(WxDxH)	in	22.44x22.44x10.24	22.44x22.44x10.24	22.44x22.44x10.24	32.68x32.68x8.07
Unit Packing Dimension(WxDxH)	in	26.06x26.06x12.48	26.06x26.06x12.48	26.06x26.06x12.48	35.83x35.83x9.84
Panel Dimension(WxDxH)	in	25.5x25.5x2	25.5x25.5x2	25.5x25.5x2	37.4x37.4x2.2
Panel Packing Dimension(WxDxH)	in	28.15x28.15x4.84	28.15x28.15x4.84	28.15x28.15x4.84	40.75x40.75x3.54
Net/Gross Weight	lb	31.97/38.14	35.27/41.01	35.71/46.96	47.18/55.34
Indoor Temperature (cooling/ heating)	F°	60-90/32-86	60-90/32-86	60-90/32-86	60-90/32-86
Liquid side/ Gas side	in	1/4" - 3/8"	1/4" - 1/2"	1/4" - 1/2"	3/8" - 5/8"



# MULTI-POSITION AIR HANDLER UNIT

## AHU 18K - 24K Btu/h



### CONTROL OPTIONS

- 24V wall thermostat included
- Remote control included
- Internet Port Kit (not included)
- Downloadable C&H app

### FILTERS

Recommended Size of Filter	Width inch:	Depth inch:	Trim inch:	
				18K-24K
	CH-M24AHU			

SMART KIT READY

**INTELLIGENT AIR FLOW:** Three speed fan motor so that static air pressure can be adjusted automatically or manually.

**ANTI-COLD AIR FUNCTION:** Fan doesn't blow until the coil is warm to prevent pushing cold air into the room upon startup.

**FAST COOL/HEAT FUNCTION:** When set temperature is more than 10 degrees difference from room temperature, the unit will run at 100% capacity to reach its set temperature faster.

**ALUMINUM COIL:** Fewer corrosion points than copper coils.

**AUXILIARY HEATER:** Purchased separately as a backup heat option for indoor units, available in 5kW, 10kW, 15kW, and 20kW models.

**AUTO RESTART FUNCTION:** Restarts automatically in the event of a power outage.

**REFRIGERANT LEAK DETECTION:** Protects the compressor from damage due to refrigerant leak by alerting user with error code "EC".

**WIRED CONTROLLER:** Compatible with most 24V wired thermostats.

**TRUE MULTI-POSITION AIR HANDLER:** Can be installed in Horizontal or Vertical upward and downward positions for optimal space usage.

(\*Smart Kit Built-In)

Indoor Model			CH-M18AHU CH-M18AHU-W*	CH-M24AHU CH-M24AHU-W*
<b>Power Supply</b>	Rated	V, Ph, Hz	208/230V, 1Ph 60Hz	208/230V, 1Ph 60Hz
<b>Cooling</b>	Rated Capacity (range)	Btu/h	18,000	24,000
	Rated Current	A	6.6	8.9
<b>Heating</b>	Rated Current	A	7	9.1
<b>Minimum Circuit Ampacity (MCA)</b>		A	3	4
<b>Max. Fuse</b>		A	15	15
<b>Indoor Air Flow (Hi/Mi/Lo)</b>		CFM	576/529/488	759/694/629
<b>Indoor Noise Level (Hi/Mi/Lo)</b>		dB(A)	38/35/34	42/40/38
<b>ESP</b>		Range	0-0.8	0-0.8
<b>Indoor</b>	Dimension (WxDxH)	inch	21.02x17.52x45.00	21.02x17.52x45.00
	Packing (WxDxH)	inch	26.57x20.87x48.62	26.57x20.87x48.62
	Net/Gross Weight	lbs.	107/127	107/127
<b>Room Temperature</b>	Cooling	°F	60-90	60-90
	Heating	°F	32-86	32-86
<b>Liquid Side/Gas side</b>		inch	1/4" / 1/2"	3/8" / 5/8"

## ELECTRIC HEATERS

### GROUPED HEATER CONTROL FOR MORE PRECISE TEMPERATURE

AHU Capacity	5kW heater	10kW heater
	One group	One group
	10KW+5KW	10KW+5KW
	W1 on 5KW	W1 on 10KW
18K(AHU)	Y	Y
24K(AHU)	Y	Y

The Auxiliary Heater is an optional feature that can be purchased separately as a back-up heating option for indoor units in case of an emergency or when the primary heating system is not working. A great solution for supplementary heating in extreme cold weather with maximum energy efficiency.

Electric Heater	Power	1.5 ton (18,000 BTU/h)	2 ton (24,000 BTU/h)
	Model		CH-M18AHU
	5KW	Y	Y
	10KW	Y	Y
	15KW	-	Y

### THREE HEATING MODES

AVAILABLE FOR DIFFERENT APPLICATIONS

Heat Pump

Heater

Heater + Heat Pump

### OPTIONAL AUXILIARY HEATER

Available in 5kW, 10kW, 15kW, and 20 kW models.

Your actual Inverter Heat Pump system and related devices may differ from images shown in this specification sheet. Test conditions are based on AHRI 210/240. Specifications are subject to change without notice. Manufacturer reserves the right to discontinue or change specifications or designs at any time without incurring obligations.

© 08.2024 All rights reserved.

