

**Job Name:**

**Location:**

**Engineer:**

**Submitted to:**

**Submitted by:**

**Reference:**

**Date:**

**Approval:**

**Construction:**

**Unit #:**

**Drawing #:**



## Performance and efficiency

Cooling		Heating	
47,000(9,500~48,500)		48,000(10,500~55,000)	
SEER2	14.6	COP	2.96
EER2	7.8	HSPF4/HSPF2-4	8.8
		HSPF5/HSPF2-5	7.3

## Operational temperature

Indoor		Outdoor	
Cooling	Heating	Cooling	Heating
60~90	32~86	5~122	-22~75



This warranty should be registered on our website [www.cooperandhunter.us](http://www.cooperandhunter.us) within 60 days of installation. The warranty is only valid when installed by a Licensed HVAC Technician. A warranty period of Seven (7) years on compressor to the original registered end-user. A warranty period of Five (5) years on all parts to the original registered end-user. Warranty applies only to products remaining in their original installation location.

## INDOOR UNIT FEATURES:

- ♦ Auto restart function
- ♦ Quiet operation
- ♦ Multiple fan speeds
- ♦ Auxiliary heater
- ♦ Turbo mode
- ♦ Adjustable static pressure
- ♦ Multi position
- ♦ Anti-cold air function
- ♦ Fast cool/heat function
- ♦ Aluminium coil
- ♦ WIFI ready
- ♦ Intelligent air flow
- ♦ Refrigerant leak detect
- ♦ Sleep mode
- ♦ Gold fin

## OUTDOOR UNIT FEATURES:

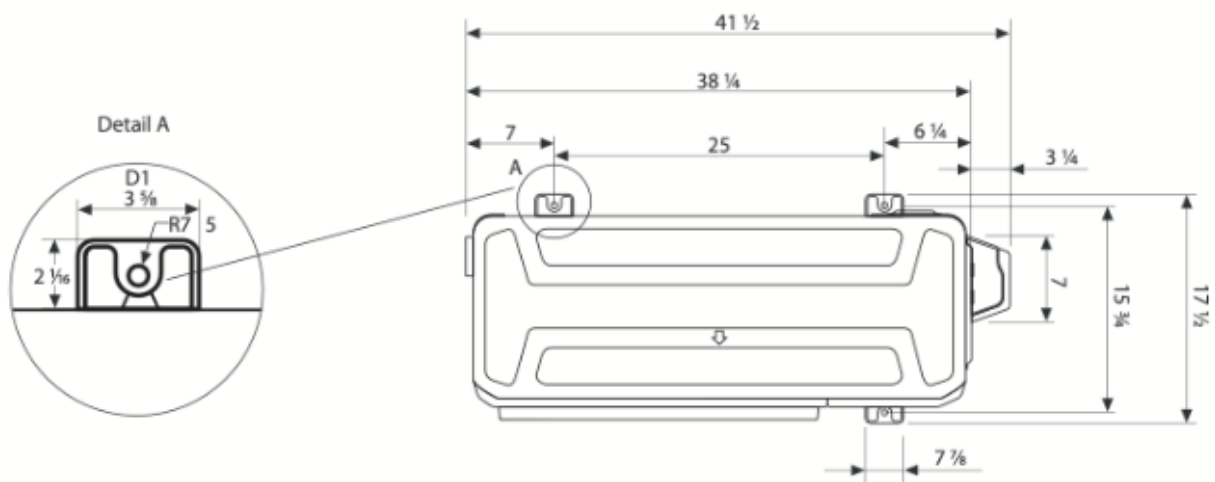
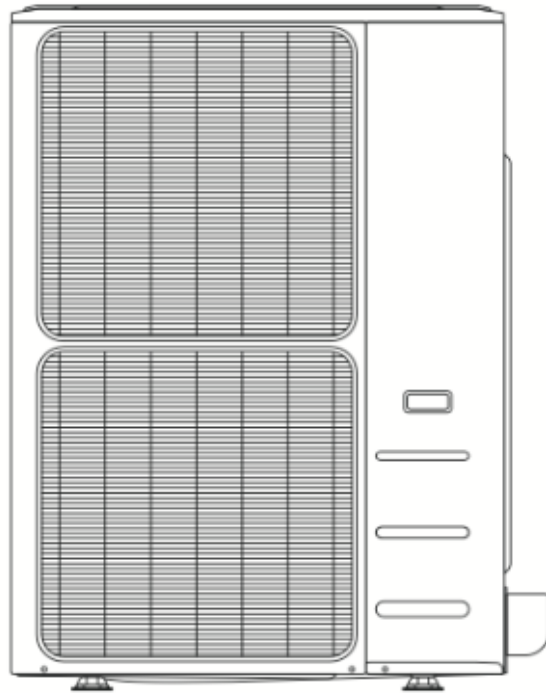
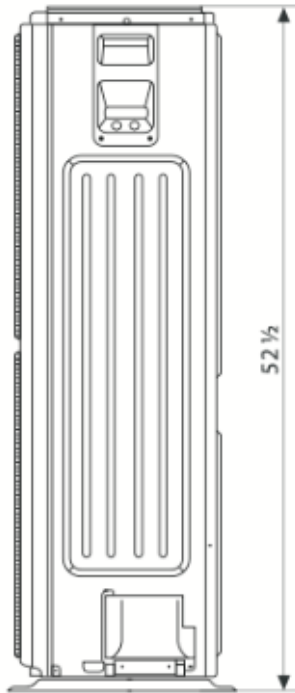
- ♦ Inverter technology
- ♦ Variable speed (fan motor & compressor)
- ♦ Heating operation in temperatures to -13 °F
- ♦ 3-Minute restart delay
- ♦ Self-diagnosis
- ♦ Drain pan heater and compressor heating belt
- ♦ Auto restart function
- ♦ Defrost
- ♦ High-efficiency pipes
- ♦ High-frequency racer technology
- ♦ Intelligent dusting switch
- ♦ Gold fin

## INCLUDED ACCESSORIES:

- ♦ Wireless remote
- ♦ Wall thermostat

Indoor Model			CH-NHPR48LCU-230VO + CH-48AHU
Power supply		V, Ph, Hz	208-230V, 1Ph, 60Hz
Voltage range		V	187-253
Connection wiring			
Cooling	Capacity	Btu/h	47,000(9,500~48,500)
	Input	w	6,000(672~5,950)
	Rated current	A	27(5.2~26)
	EER/EER2	Btu/w	7.8
	SEER/SEER2	Btu/w	14.6
Heating at 47 °F	Capacity	Btu/h	48,000(10,500~55,000)
	Input	kW	4,752(821~5,700)
	Rated current	A	19.5(5.53~26)
	COP	W/W	2.96
	HSPF4/HSPF2-4	Btu/w	8.8
	HSPF5/HSPF2-5	Btu/w	7.3
Min. circuit ampacity		A	7.5
Max. fuse		A	15
Indoor fan motor	Qty		1
	Input	w	560
	RLA	A	6
Indoor air flow (Turbo/Hi/Med/Lo) (No duct)		CFM	1,470.59/1,282.35/1,094.12/905.88
ESP	Range	ln.wg.	
Indoor noise level (Hi/Med/Lo)		dB(A)	53.5/47/43.5
Dehumidification		pnt/h	
Indoor unit	Dimensions (WxDxH)	in	21.02x21.02x49.02
	Packing (WxDxH)	in	26.57x24.41x52.56
	Net/Gross weight	lbs	132.50/155.87
Drainage water pipe diameter		in	1"
Refrigerant piping	Liquid side/Gas side	in	3/8"/5/8"
Controller			RG10D-standard remote&120X or 120N wire controller
Room temperature	Cooling	F	60~90
	Heating	F	32~86

Outdoor Model			CH-NHPR48LCU-230VO
Power supply		V, Ph, Hz	187-253
Min. circuit ampacity		A	40
Max. fuse		A	50
Compressor	Model		EAPQ420D1UMUA
	Type		ROTARY
	Brand		GMCC
	Capacity	Btu/h	44,010
	Input	W	3,565 ± 3%
	Refrigerant oil	oz	VG74 49.4
Outdoor fan motor	Qty		2
	Input	W	126
	RLA	A	1.2
	Speed	r/min	900/850/800/750
Outdoor air flow (Max)		CFM	4,500
Outdoor noise level (Max)		dB(A)	64
Outdoor unit	Dimensions (WxDxH)	in	37.48x16.34x52.48
	Packing (WxDxH)	in	43.11x19.49x58.27
	Net/Gross weight	in	227.07/255.73
Refrigerant	Type/Quantity	oz	R410A
Refrigerant precharge		ft	25
Additional charge for each ft		oz	
Refrigerant piping	Liquid side/Gas side	in	3/8"/5/8"
	Max. pipe length	ft	213.25
	Max. difference in level	ft	98.42
Ambient temperature	Cooling	F	5~122
	Heating	F	-22~75



Unit: inc

