

Job Name: _____
Location: _____
Engineer: _____
Submitted to: _____
Submitted by: _____
Reference: _____

Date: _____
Approval: _____
Construction: _____
Unit #: _____
Drawing #: _____



Performance and efficiency

Cooling		Heating	
36,000(1,200~41,000)		40,000(9,800~45,000)	
SEER2	14.9	COP	3.1
EER2	10	HSPF4/HSPF2-4	8.9
		HSPF5/HSPF2-5	7.5

Operational temperature

Indoor		Outdoor	
Cooling	Heating	Cooling	Heating
60~90	32~86	5~122	-22~75



This warranty should be registered on our website www.cooperandhunter.us within 60 days of installation. The warranty is only valid when installed by a Licensed HVAC Technician. A warranty period of Seven (7) years on compressor to the original registered end-user. A warranty period of Five (5) years on all parts to the original registered end-user. Warranty applies only to products remaining in their original installation location.

INDOOR UNIT FEATURES:

- ◆ Auto restart function
- ◆ Quiet operation
- ◆ Multiple fan speeds
- ◆ Auxiliary heater
- ◆ Turbo mode
- ◆ Adjustable static pressure
- ◆ Multi position
- ◆ Anti-cold air function
- ◆ Fast cool/heat function
- ◆ Aluminium coil
- ◆ WIFI ready
- ◆ Intelligent air flow
- ◆ Refrigerant leak detect
- ◆ Sleep mode
- ◆ Gold fin

OUTDOOR UNIT FEATURES:

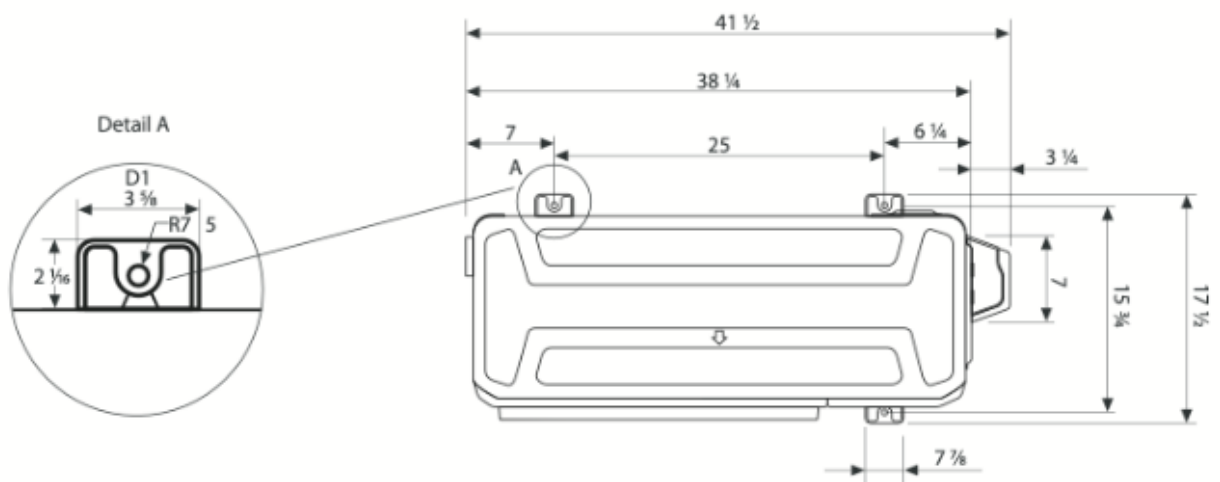
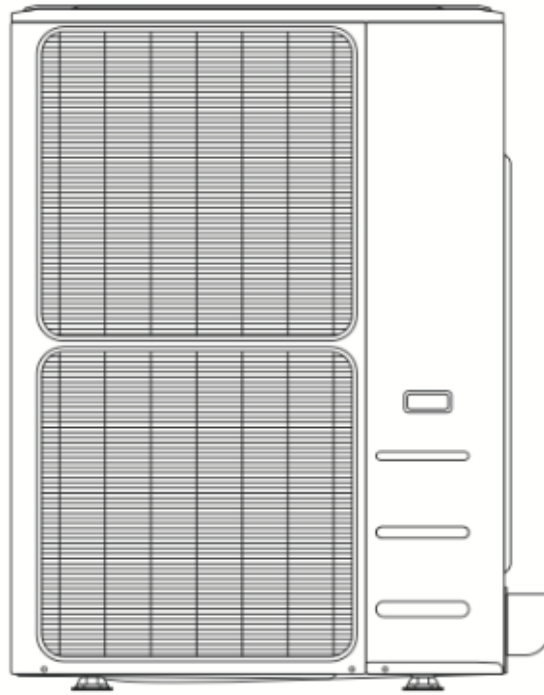
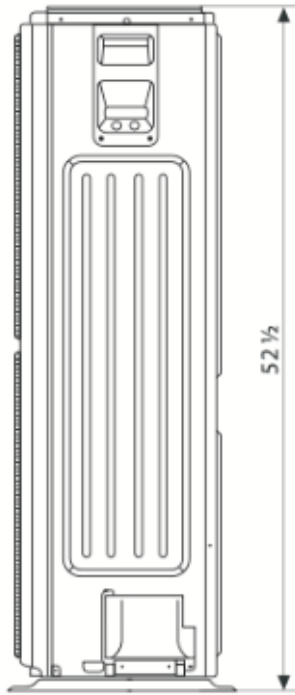
- ◆ Inverter technology
- ◆ Variable speed (fan motor & compressor)
- ◆ Heating operation in temperatures to -13 °F
- ◆ 3-Minute restart delay
- ◆ Self-diagnosis
- ◆ Drain pan heater and compressor heating belt
- ◆ Auto restart function
- ◆ Defrost
- ◆ High-efficiency pipes
- ◆ High-frequency racer technology
- ◆ Intelligent dusting switch
- ◆ Gold fin

INCLUDED ACCESSORIES:

- ◆ Wireless remote
- ◆ Wall thermostat

Indoor Model		CH-NHPR36LCU-230VO + CH-36AHU	
Power supply		V, Ph, Hz	208-230V, 1Ph, 60Hz
Voltage range		V	187-253
Connection wiring			
Cooling	Capacity	Btu/h	36,000(1,2000~41,000)
	Input	w	3,670(480~4,550)
	Rated current	A	16(3.6~21)
	EER/EER2	Btu/w	10
	SEER/SEER2	Btu/w	14.9
Heating at 47 °F	Capacity	Btu/h	40,000(9,800~45,000)
	Input	kW	3,780(580~4,400)
	Rated current	A	16.6(4.2~20)
	COP	W/W	3.1
	HSPF4/HSPF2-4	Btu/w	8.9
	HSPF5/HSPF2-5	Btu/w	7.5
Min. circuit ampacity		A	5
Max. fuse		A	15
Indoor fan motor	Qty		1
	Input	w	375
	RLA	A	4
Indoor air flow (Turbo/Hi/Med/Lo) (No duct)		CFM	1,188.24/1,082.35/970.59/864.71
ESP	Range	ln.wg.	
Indoor noise level (Hi/Med/Lo)		dB(A)	46/42/39.5
Dehumidification		pnt/h	
Indoor unit	Dimensions (WxDxH)	in	21.02x21.02x49.02
	Packing (WxDxH)	in	26.57x24.41x52.56
	Net/Gross weight	lbs	129.63/153
Drainage water pipe diameter		in	1"
Refrigerant piping	Liquid side/Gas side	in	3/8"/5/8"
Controller			RG10D-standard remote&120X or 120N wire controller
Room temperature	Cooling	F	60~90
	Heating	F	32~86

Outdoor Model		CH-NHPR36LCU-230VO	
Power supply		V, Ph, Hz	187-253
Min. circuit ampacity		A	40
Max. fuse		A	50
Compressor	Model		EAPQ420D1UMUA
	Type		ROTARY
	Brand		GMCC
	Capacity	Btu/h	44,010
	Input	W	3,565 ± 3%
	Refrigerant oil	oz	VG74 49.4
Outdoor fan motor	Qty		2
	Input	W	126
	RLA	A	1.2
	Speed	r/min	800/750/650
Outdoor air flow (Max)		CFM	4,500
Outdoor noise level (Max)		dB(A)	62
Outdoor unit	Dimensions (WxDxH)	in	37.48x16.34x52.48
	Packing (WxDxH)	in	43.11x19.49x58.27
	Net/Gross weight	in	220.24/248.02
Refrigerant	Type/Quantity	oz	R410A
Refrigerant precharge		ft	25
Additional charge for each ft		oz	
Refrigerant piping	Liquid side/Gas side	in	3/8"/5/8"
	Max. pipe length	ft	213.25
	Max. difference in level	ft	98.42
Ambient temperature	Cooling	F	5~122
	Heating	F	-22~75



Unit: inc

