

**Job Name:** \_\_\_\_\_  
**Location:** \_\_\_\_\_  
**Engineer:** \_\_\_\_\_  
**Submitted to:** \_\_\_\_\_  
**Submitted by:** \_\_\_\_\_  
**Reference:** \_\_\_\_\_

**Date:** \_\_\_\_\_  
**Approval:** \_\_\_\_\_  
**Construction:** \_\_\_\_\_  
**Unit #:** \_\_\_\_\_  
**Drawing #:** \_\_\_\_\_



### Performance and efficiency

Cooling		Heating	
57,000(13,000~60,000)		60,000(15,500~60,400)	
SEER2	16	COP	3.4
EER2	9.6	HSPF4/HSPF2-4	8.5
		HSPF5/HSPF2-5	6.7

### Operational temperature

Indoor		Outdoor	
Cooling	Heating	Cooling	Heating
60~90	32~86	5~122	-13~75



This warranty should be registered on our website [www.cooperandhunter.us](http://www.cooperandhunter.us) within 60 days of installation. The warranty is only valid when installed by a Licensed HVAC Technician. A warranty period of Seven (7) years on compressor to the original registered end-user. A warranty period of Five (5) years on all parts to the original registered end-user. Warranty applies only to products remaining in their original installation location.

### INDOOR UNIT FEATURES:

- ◆ Auto restart function
- ◆ Quiet operation
- ◆ Multiple fan speeds
- ◆ Auxiliary heater
- ◆ Turbo mode
- ◆ Adjustable static pressure
- ◆ Multi position
- ◆ Anti-cold air function
- ◆ Fast cool/heat function
- ◆ Aluminium coil
- ◆ WIFI ready
- ◆ Intelligent air flow
- ◆ Refrigerant leak detect
- ◆ Sleep mode
- ◆ Gold fin

### OUTDOOR UNIT FEATURES:

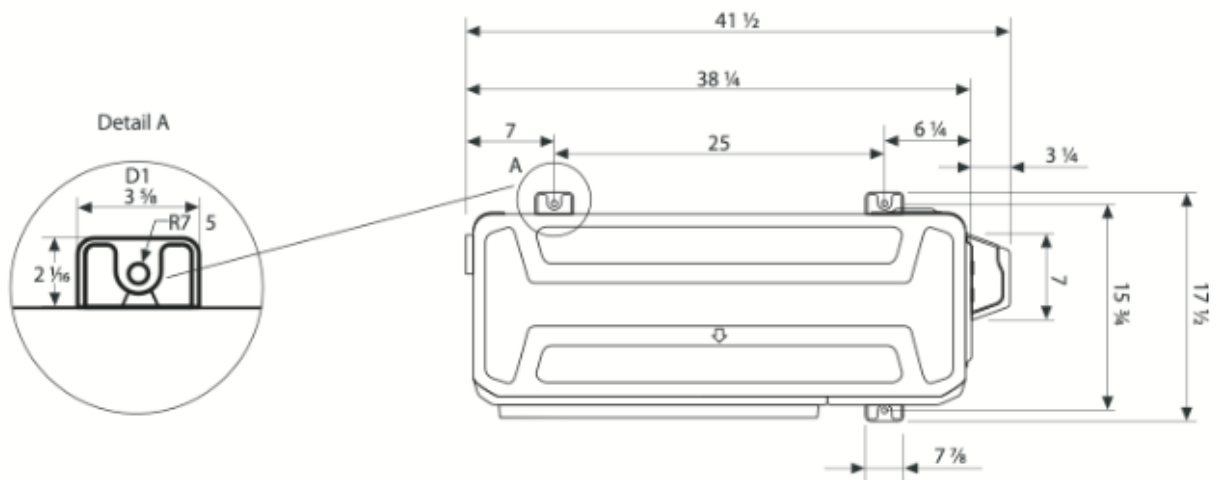
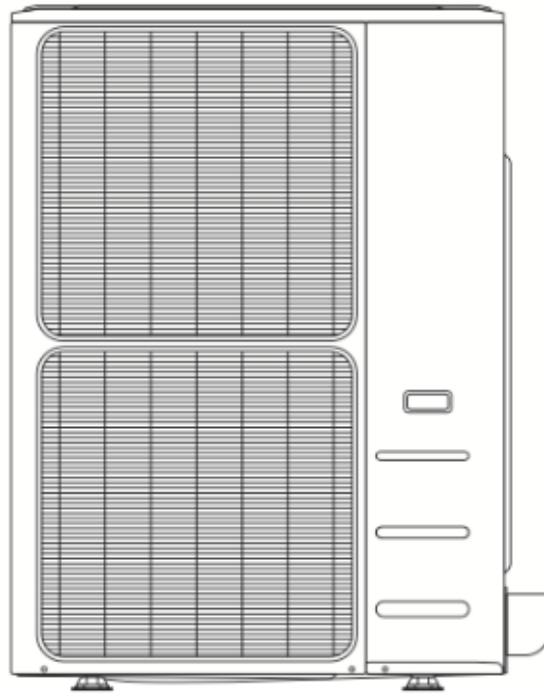
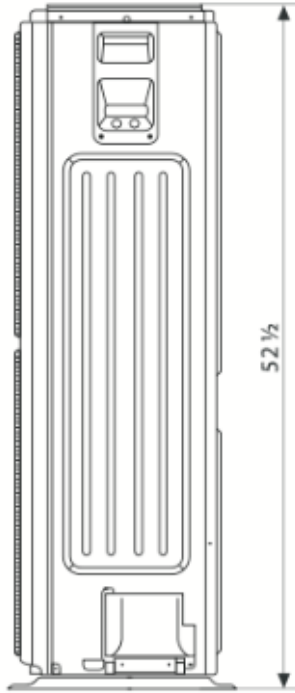
- ◆ Inverter technology
- ◆ Variable speed (fan motor & compressor)
- ◆ Heating operation in temperatures to -13 °F
- ◆ 3-Minute restart delay
- ◆ Self-diagnosis
- ◆ Drain pan heater and compressor heating belt
- ◆ Auto restart function
- ◆ Defrost
- ◆ High-efficiency pipes
- ◆ High-frequency racer technology
- ◆ Intelligent dusting switch
- ◆ Gold fin

### INCLUDED ACCESSORIES:

- ◆ Wireless remote
- ◆ Wall thermostat

Indoor Model		CH-N60LCU-230VO + CH-60AHU	
Power supply		V, Ph, Hz	208-230V, 1Ph, 60Hz
Voltage range		V	187-253
Connection wiring			
Cooling	Capacity	Btu/h	57,000(13,000~60,000)
	Input	w	5,935(430~6,250)
	Rated current	A	25.5(3.54~27.5)
	EER/EER2	Btu/w	9.6
	SEER/SEER2	Btu/w	16
Heating at 47 °F	Capacity	Btu/h	60,000(15,500~60,400)
	Input	kW	5,170(787~5,450)
	Rated current	A	24(5.51~24)
	COP	W/W	3.4
	HSPF4/HSPF2-4	Btu/w	8.5
	HSPF5/HSPF2-5	Btu/w	6.7
Min. circuit ampacity		A	9
Max. fuse		A	15
Indoor fan motor	Qty		1
	Input	w	750
	RLA	A	7
Indoor air flow (Turbo/Hi/Med/Lo) (No duct)		CFM	1,805.88/1,582.35/1,358.82/1,135.29
ESP	Range	ln.wg.	
Indoor noise level (Hi/Med/Lo)		dB(A)	50/47/45
Dehumidification		pnt/h	
Indoor unit	Dimensions (WxDxH)	in	21.02x24.49x52.99
	Packing (WxDxH)	in	27.95x26.77x56.50
	Net/Gross weight	lbs	164.02/189.82
Drainage water pipe diameter		in	1"
Refrigerant piping	Liquid side/Gas side	in	3/8"/7/8"
Controller			RG10D-standard remote&120X or 120N wire controller
Room temperature	Cooling	F	60~90
	Heating	F	32~86

Outdoor Model		CH-N60LCU-230VO	
Power supply	V, Ph, Hz	187-253	
Min. circuit ampacity	A	39	
Max. fuse	A	50	
Compressor	Model	KTQ420D1UMU	
	Type	ROTARY	
	Brand	GMCC	
	Capacity	Btu/h	46,740
	Input	W	3,700
	Refrigerant oil	oz	VG74 47.3
Outdoor fan motor	Qty	2	
	Input	W	126
	RLA	A	1.5
	Speed	r/min	850/750/650
Outdoor air flow (Max)	CFM	2,647.06	
Outdoor noise level (Max)	dB(A)	61	
Outdoor unit	Dimensions (WxDxH)	in	37.48x16.34x52.48
	Packing (WxDxH)	in	43.11x19.49x58.27
	Net/Gross weight	in	217.15/248.24
Refrigerant	Type/Quantity	oz	R410A
Refrigerant precharge		ft	25
Additional charge for each ft		oz	
Refrigerant piping	Liquid side/Gas side	in	3/8"/7/8"
	Max. pipe length	ft	213.25
	Max. difference in level	ft	98.42
Ambient temperature	Cooling	F	5~122
	Heating	F	-13~75



Unit: inc

