

**Job Name:** \_\_\_\_\_  
**Location:** \_\_\_\_\_  
**Engineer:** \_\_\_\_\_  
**Submitted to:** \_\_\_\_\_  
**Submitted by:** \_\_\_\_\_  
**Reference:** \_\_\_\_\_

**Date:** \_\_\_\_\_  
**Approval:** \_\_\_\_\_  
**Construction:** \_\_\_\_\_  
**Unit #:** \_\_\_\_\_  
**Drawing #:** \_\_\_\_\_

### KEY FEATURES:

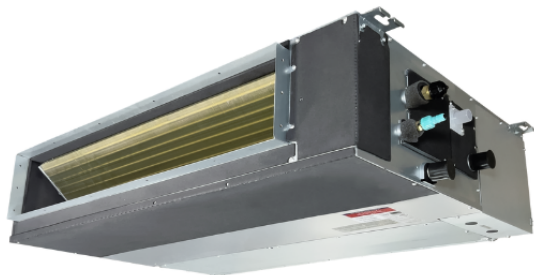
- Flexible Installation
- Compatible with Regular or Hyper Heat Pump
- SmartPort Ready
- Wall Thermostat Included
- Remote Control Included

### NOTES:

\_\_\_\_\_  
 \_\_\_\_\_  
 \_\_\_\_\_  
 \_\_\_\_\_  
 \_\_\_\_\_



## Slim Duct

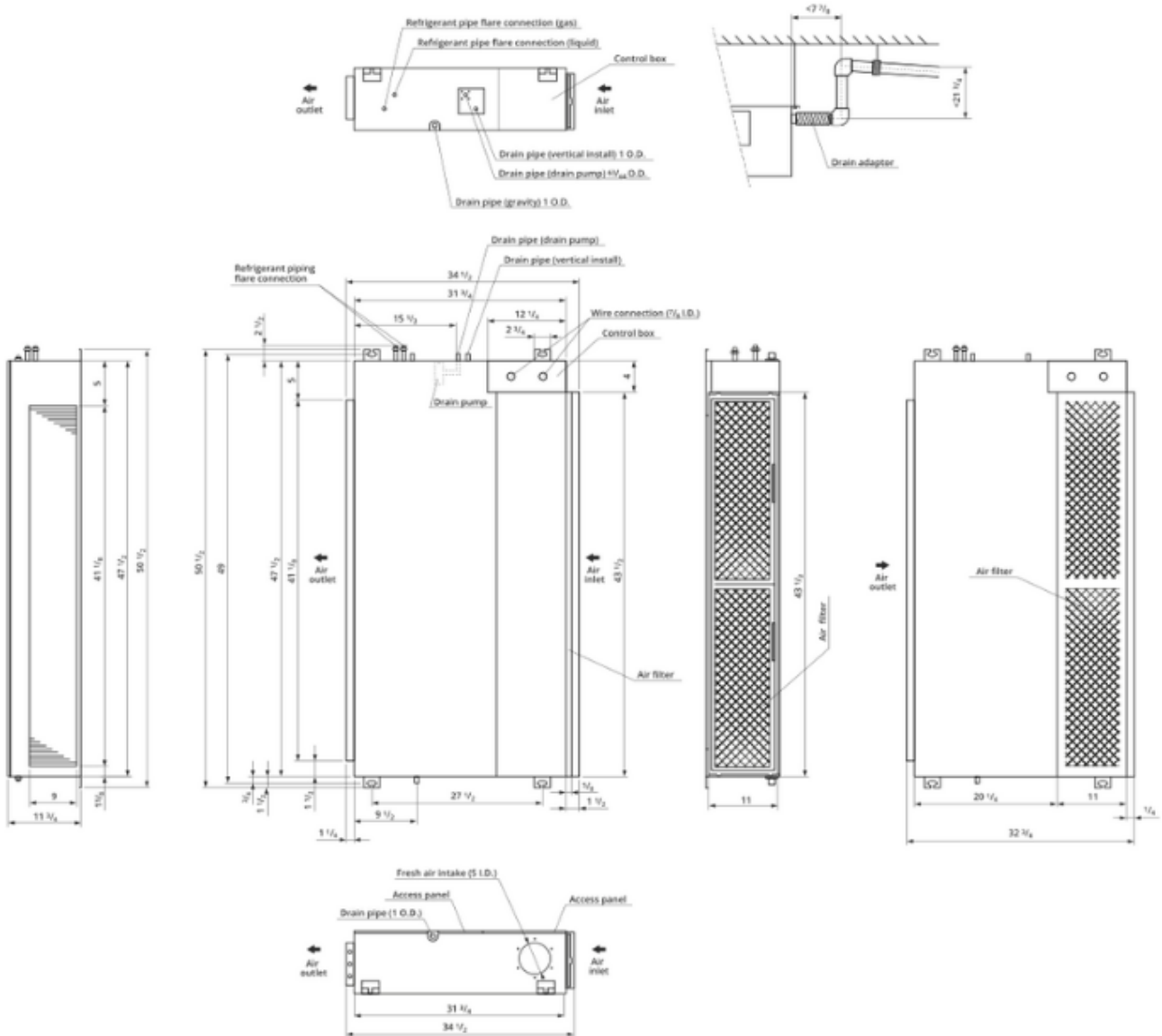


Indoor Model			CH-48LCDTU/I
Power supply		V, Ph, Hz	208-230V, 1Ph, 60Hz
Communication wiring			14AWG*2 Stranded, shielded
Cooling	Capacity	Btu/h	48,000(10,300~53,100)
	Input	w	5,840(1,070~6,020)
	Rated current	A	26(6.58~26.29)
	EER/EER2	Btu/w	8.2
	SEER/SEER2	Btu/w	14.3
Heating at 47 °F	Capacity	Btu/h	52,000(11,500~63,600)
	Input	W	4,650(690~5,570)
	Rated current	A	20.5(4.78~24.3)
	COP	W/W	3.28
	HSPF4/HSPF2-4		10.3
	HSPF5/HSPF2-5		8.4
Indoor fan motor		Qty	1
		Input	560
		RLA	2.5
Indoor air flow (Turbo/Hi/Med/Lo) (No duct)		CFM	1,529.41/1,529.41/1,117.65/735.29
ESP (range)		In.wg.	0-0.64
Indoor noise level (Hi/Med/Lo)		dB(A)	54.5/50.5/47.5
Dehumidification		L/H	10.14
Indoor unit	Dimensions (WxDxH)	inch	47.24x34.41x11.81
	Packing (WxDxH)	inch	55.31x36.02x14.37
	Net/Gross weight	lbs	119.71/141.76
Drainage water pipe diameter		inch	1"
Refrigerant piping (Liquid side/Gas side)		inch	3/8"/5/8"
Design pressure		PSIG	550/340
Controller			RG10K-exclusive remote&120X or 120N wire controller
Room temperature	Cooling	F	62~90
	Heating	F	32~86

Outdoor Model			CH-NHPR48LCU-230VO
Power supply		V, Ph, Hz	208-230V, 1Ph, 60Hz
Min. circuit ampacity		A	40
Max. fuse		A	50
Compressor	Model		EAPQ420D1UMUA
	Type		ROTARY
	Brand		GMCC
	Capacity	Btu/h	44,010
	Input	w	3.565
	Rated current (RLA)	A	33
	Refrigerant oil	oz	VG74 49.4
Outdoor fan motor	Qty		2
	Input	w	126
	RLA	A	1.2
	Speed	r/min	900/850/800/750
Outdoor air flow (Max)		CFM	4,500
Outdoor noise level (Max)		dB(A)	65
Throttle type			EXV+Throttle valve
Outdoor unit	Dimensions (WxDxH)	inch	37.48x16.34x52.48
	Packing (WxDxH)	inch	43.11x19.49x58.27
	Net/Gross weight	inch	227.07/255.73
Refrigerant	Type		R410A
	Precharge	ft	25
Additional charge for 1/4 inch liquid pipe		oz	
Additional charge for 3/8 inch liquid pipe		oz	0.32
Refrigerant piping	Liquid side/Gas side	inch	3/8"/5/8"
	Max. pipe length	ft	213.25
	Max. difference in level	ft	98.42
Ambient temperature	Cooling	F	5~122
	Heating	F	-22~75

CH-48LCDTU/I

Unit: inch



47.24x34.41x11.81

