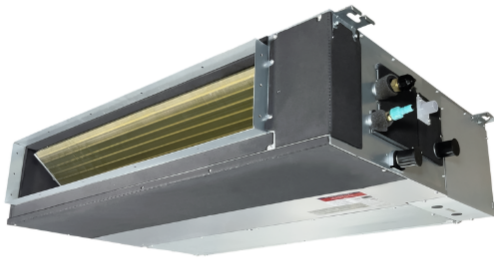


**Job Name:** \_\_\_\_\_  
**Location:** \_\_\_\_\_  
**Engineer:** \_\_\_\_\_  
**Submitted to:** \_\_\_\_\_  
**Submitted by:** \_\_\_\_\_  
**Reference:** \_\_\_\_\_

**Date:** \_\_\_\_\_  
**Approval:** \_\_\_\_\_  
**Construction:** \_\_\_\_\_  
**Unit #:** \_\_\_\_\_  
**Drawing #:** \_\_\_\_\_

## Slim Duct



### KEY FEATURES:

- Flexible Installation
- Compatible with Regular or Hyper Heat Pump
- SmartPort Ready
- Wall Thermostat Included
- Remote Control Included

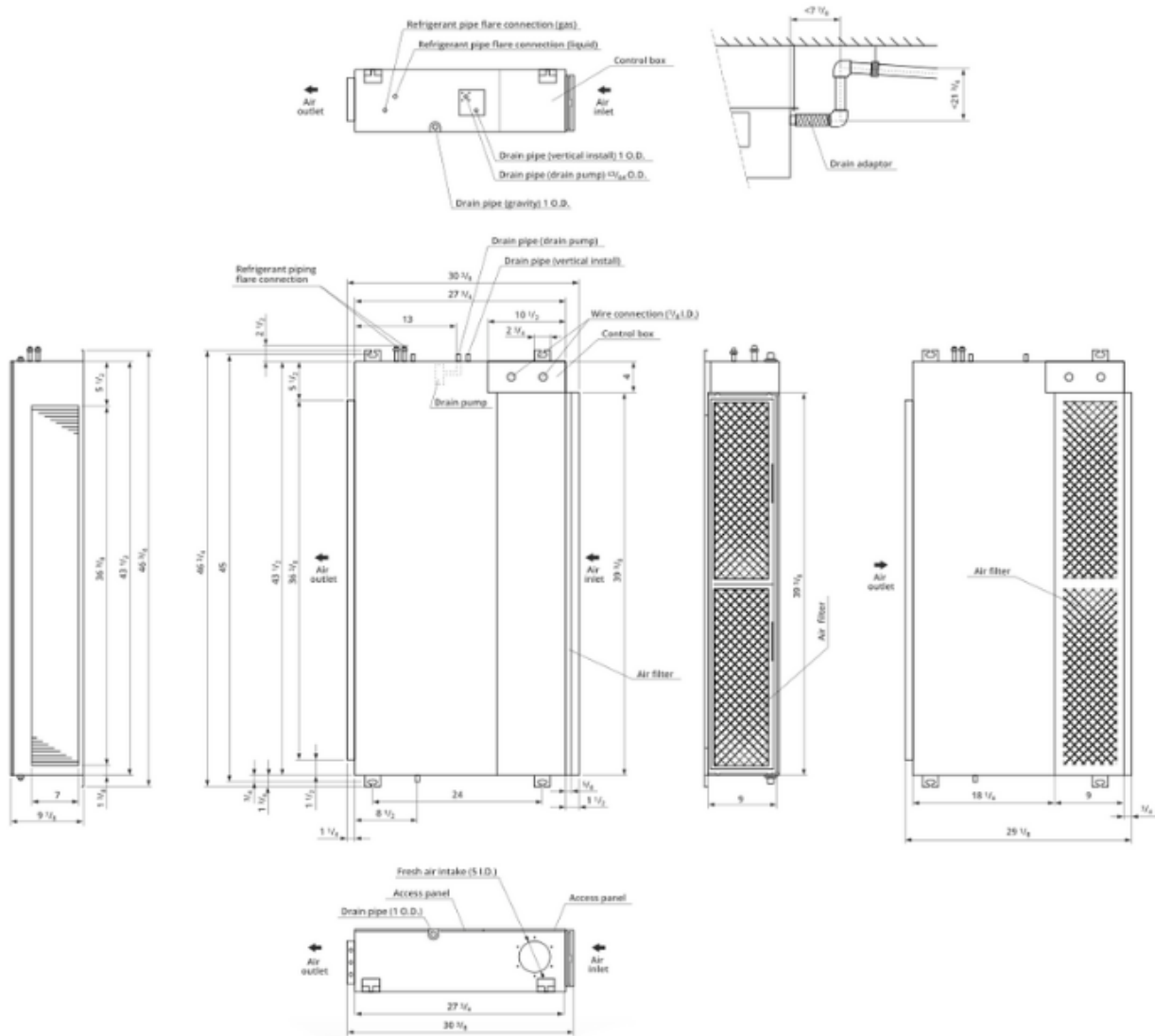


### SPECIFICATIONS:

Indoor Model			CH-M24DTUI
Power Supply	Rated	V, Ph, Hz	208-230V, 1Ph, 60Hz
Cooling	Rated Capacity	Btu/h	24,000
Heating	Rated Capacity	Btu/h	25,000
Minimum Circuit Ampacity (MCA)		A	3
Max. Fuse		A	15
Indoor Air Flow (Hi/Mi/Lo)		CFM	775.47/693.06/434.88
Indoor Noise Level (Hi/Mi/Lo)		dB(A)	44/41/37
External static pressure (SlimDuct/AHU only)		in. WG	0.3
Drainage water pipe diameter		inch	1"
Diameter of refrigerant pipe (Liquid/Gas Side)		Inch	3/8" - 5/8"
Dehumidification		Pnt/H	4.18
Communication wiring			14AWG*4
Indoor	Dimension (WxDxH)	inch	43.31x30.47x9.80
	Packing (WxDxH)	inch	51.38x31.69x12.40
	Net/Gross Weight	lbs.	90.39/105.82

CH-M24DTUI

Unit: inch



43.31x30.47x9.80