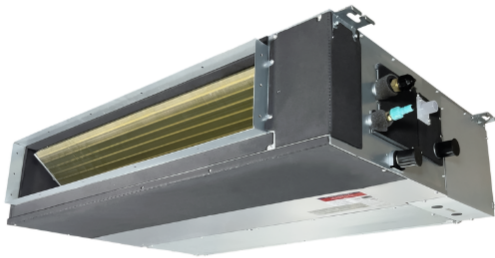


**Job Name:** \_\_\_\_\_  
**Location:** \_\_\_\_\_  
**Engineer:** \_\_\_\_\_  
**Submitted to:** \_\_\_\_\_  
**Submitted by:** \_\_\_\_\_  
**Reference:** \_\_\_\_\_

**Date:** \_\_\_\_\_  
**Approval:** \_\_\_\_\_  
**Construction:** \_\_\_\_\_  
**Unit #:** \_\_\_\_\_  
**Drawing #:** \_\_\_\_\_

## Slim Duct



### KEY FEATURES:

- Flexible Installation
- Compatible with Regular or Hyper Heat Pump
- SmartPort Ready
- Wall Thermostat Included
- Remote Control Included

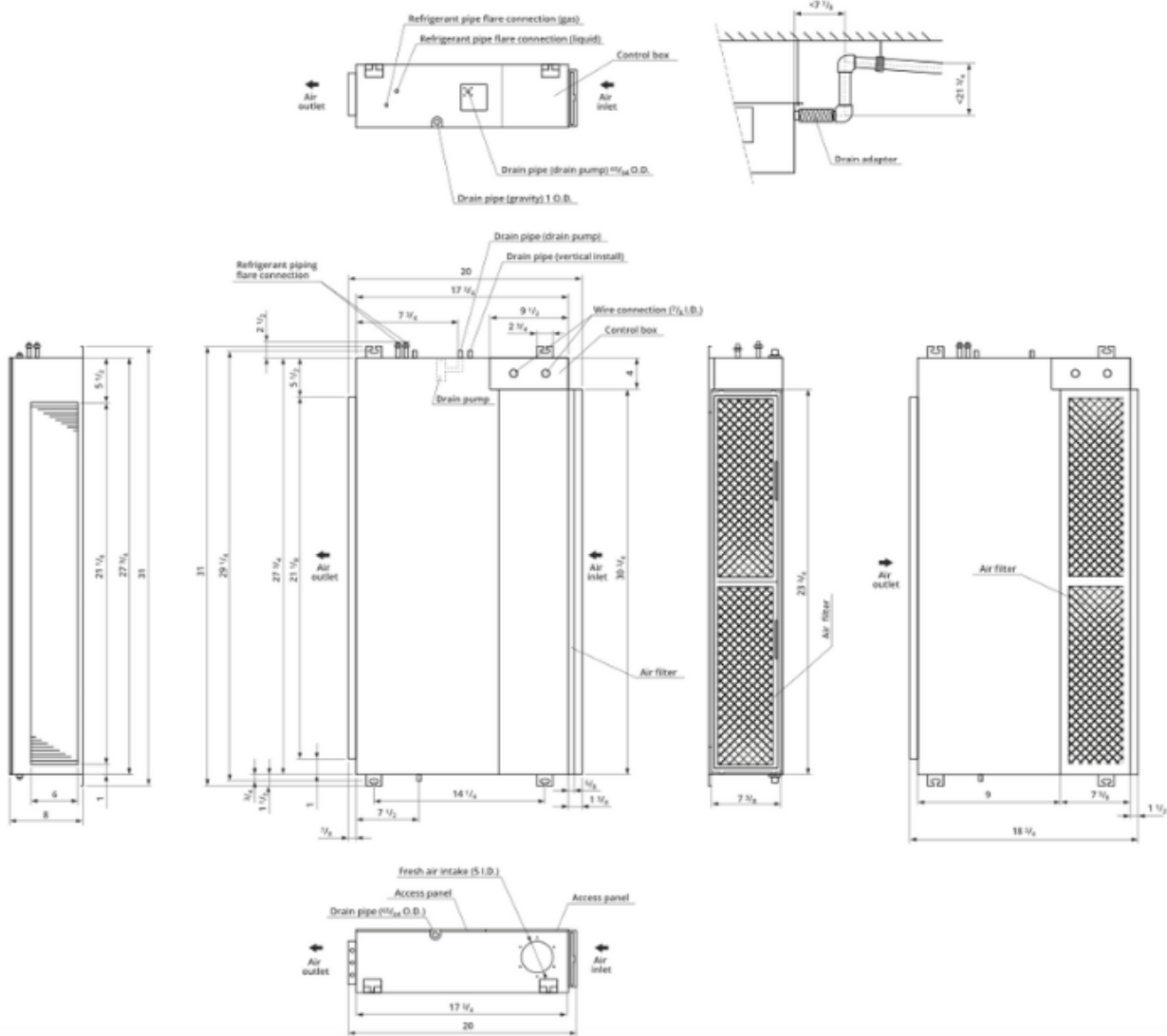


### SPECIFICATIONS:

Indoor Model			CH-M09DTUI
Power Supply	Rated	V, Ph, Hz	208-230V, 1Ph, 60Hz
Cooling	Rated Capacity	Btu/h	9,000
Heating	Rated Capacity	Btu/h	10,000
Minimum Circuit Ampacity (MCA)		A	1.3
Max. Fuse		A	15
Indoor Air Flow (Hi/Mi/Lo)		CFM	352.94/282.35/176.47
Indoor Noise Level (Hi/Mi/Lo)		dB(A)	33.5/28.5/27
External static pressure (SlimDuct/AHU only)		in. WG	0.3
Drainage water pipe diameter		inch	1"
Diameter of refrigerant pipe (Liquid/Gas Side)		Inch	1/4" - 3/8"
Dehumidification		Pnt/H	2.11
Communication wiring			14AWG*4
Indoor	Dimension (W×D×H)	inch	27.56x19.92x7.87
	Packing (W×D×H)	inch	33.86x21.26x11.22
	Net/Gross Weight	lbs.	39.02/48.28

CH-M09DTUI

Unit: inch



27.56x19.92x7.87