

SUBMITTAL DATA SHEET
CH-36LCDTUI

Job Name:
 Location:
 Engineer:
 Submitted to:
 Submitted by:
 Reference:

Date:
 Approval:
 Construction:
 Unit #:
 Drawing #:

PERFORMANCE AND EFFICIENCY


Cooling		Heating	
36,000 Btu/h		40,000 Btu/h	
SEER	16.5	HSPF4/ HSPF5	11.5/10
EER	9	COP	3.37

OPERATION TEMPERATURE RANGE

Cooling	Heating
62~90°F	32~86°F

ELECTRICAL

Power supply	208-230V/ 60Hz, 1Ph
MCA	30
MFA	50
Fan motor	
Input	250 W
RLA	1.6 A

MCA: Minimum Circuit Ampacity **MFA:** Max. fuse A **RLA:** Rated Load

PIPING

Refrigerant piping Liquid side/Gas side	3/8 - 5/8 in
-----------------------------------------	--------------

This warranty should be registered on our web-site www.cooperandhunter.us within 60 days of installation. The warranty is only valid when installed by a Licensed HVAC Technician. A warranty period of Seven (7) years on compressor to the original registered end-user. A warranty period of Five (5) years on all parts to the original registered end user. Warranty applies only to products remaining in their original installation location.


FUTURES

- Flexible Installation
- Fresh Air Function
- Wired Control
- Multi-Channel Air Distribution
- Built-In Water Pump
- Golden fin for outdoor and indoor
- Lower Noise
- Higher Pipe Limits
- Slim Design

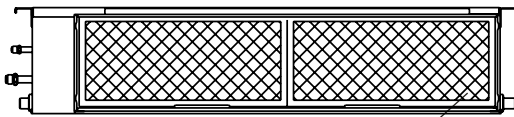
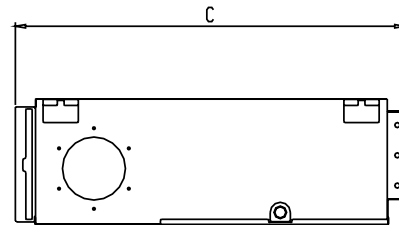
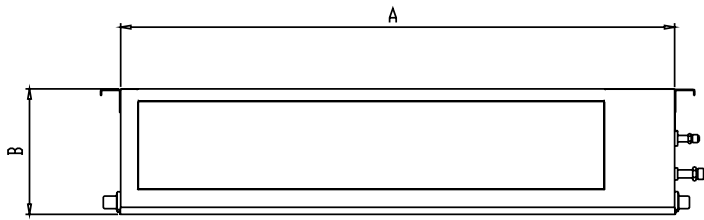
UNIT SPECIFICATION

Air Flow (Hi/Mi/Lo)	1082/912/703 CFM
Noise Level (Hi/Mi/Lo)	45.5/42/39 dB(A)
Unit Dimension(WxDxH)	43.31x30.47x9.8 in
Net/Gross Weight	106.48/122.36 lb

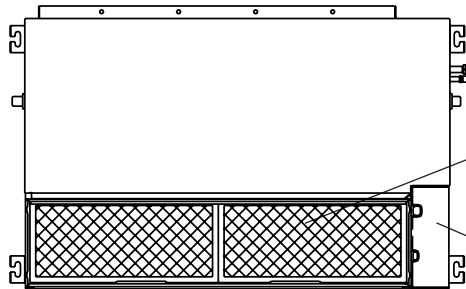
SUBMITTAL DATA SHEET

CH-36LCDTUI

INDOOR UNIT



Air filter



Air filter

Electric control box

Outline dimension, in

A	B	C
53.54	9.8	30.47